



E-Series

Completely New Gear Box Range!



E-Series

KUMERA E-Series

Completely New Gear Box Range!

The new E- and SE-series is especially designed for demanding agitator applications in process industry.

The range comprises 15 gear models. Sizes are divided in optimum way to meet required both torque range and ratio requirements.

The maximum output torque is 840 kNm and the maximum ratio is 3550:1.

The range consists of two version options. E-version is being offered as a standard. The parallel SE-model is designed for more demanding applications.

Optimum dimensions for the housing are result of very extensive FEM-analysis. (Finite Element Method).

External radial forces affecting the output shaft extension are specially taken into account when designing the housing and the output shaft and its bearings.

The parts which need to be maintained have been placed in one location to make the service operations faster and easier.

The lubrication of the bearings are always done with filtered oil to guarantee trouble free operation and maximum life time of bearings.

Pressure lubrication systems are covering all bearings. The oil nozzles can be maintained without dismantling the gearbox.

The output shaft can be equipped with a key way or a fixed flange. When using a output shaft with fixed flange there is no need to have a separate coupling half.

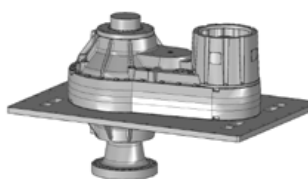
The New E-series has two different foot mounting alternatives. One is casted structure and the other is based on steel plate which can be easily modified according to customer's need.

The sealing options for the output shaft are dry-sump, dry-well or lip seal. Dry-sump sealing is completely service free alternative. Lip seal construction is equipped with leakage oil connections.

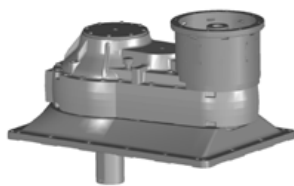
According to customer's need the new E-series gearboxes can be delivered completely fitted with additional accessories and compatible with ATEX requirements.

The E-series can be equipped with:

- Heating element
- Separate lubrication unit
- Remote condition monitoring:
Kumera Guar Gear 200



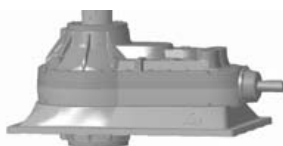
SEM-gear unit with fixed mounting flange



SELM/ELM-gear unit with casted mounting foot



SEL/EL-bevel gear unit with fixed mounting foot



SEL/EL-bevel gear unit with casted mounting foot



SE-bevel gear unit with casted mounting flange

KUMERA POWER TRANSMISSION GROUP

KUMERA DRIVES OY

Kumerankatu 2
FI-11100 Riihimäki
FINLAND
Tel. +358 20 755 4200
Fax: +358 20 755 4220
E-mail: drives@kumera.com

KUMERA AS

P.O. Box 2043
N-3202 Sandefjord
NORWAY
Tel. +47 33 48 54 54
Fax: +47 33 48 54 55
E-mail: sales@kumera.no

www.kumera.com

KUMERA ANTRIEBSTECHNIK GMBH

Raiffeisenstrasse 38-40
A-8010 Graz
AUSTRIA
Tel. +43 316 471 524-0
Fax: +43 316 462 550
E-mail: kumera.graz@kumera.com



KUMERA (CHINA) CO., LTD.

168 Meifeng Road
Kunshan 215300, Jiangsu
CHINA
Tel. +86 512 503 61701
Fax: +86 512 503 61710
E-mail: kumerachina@kumera.com